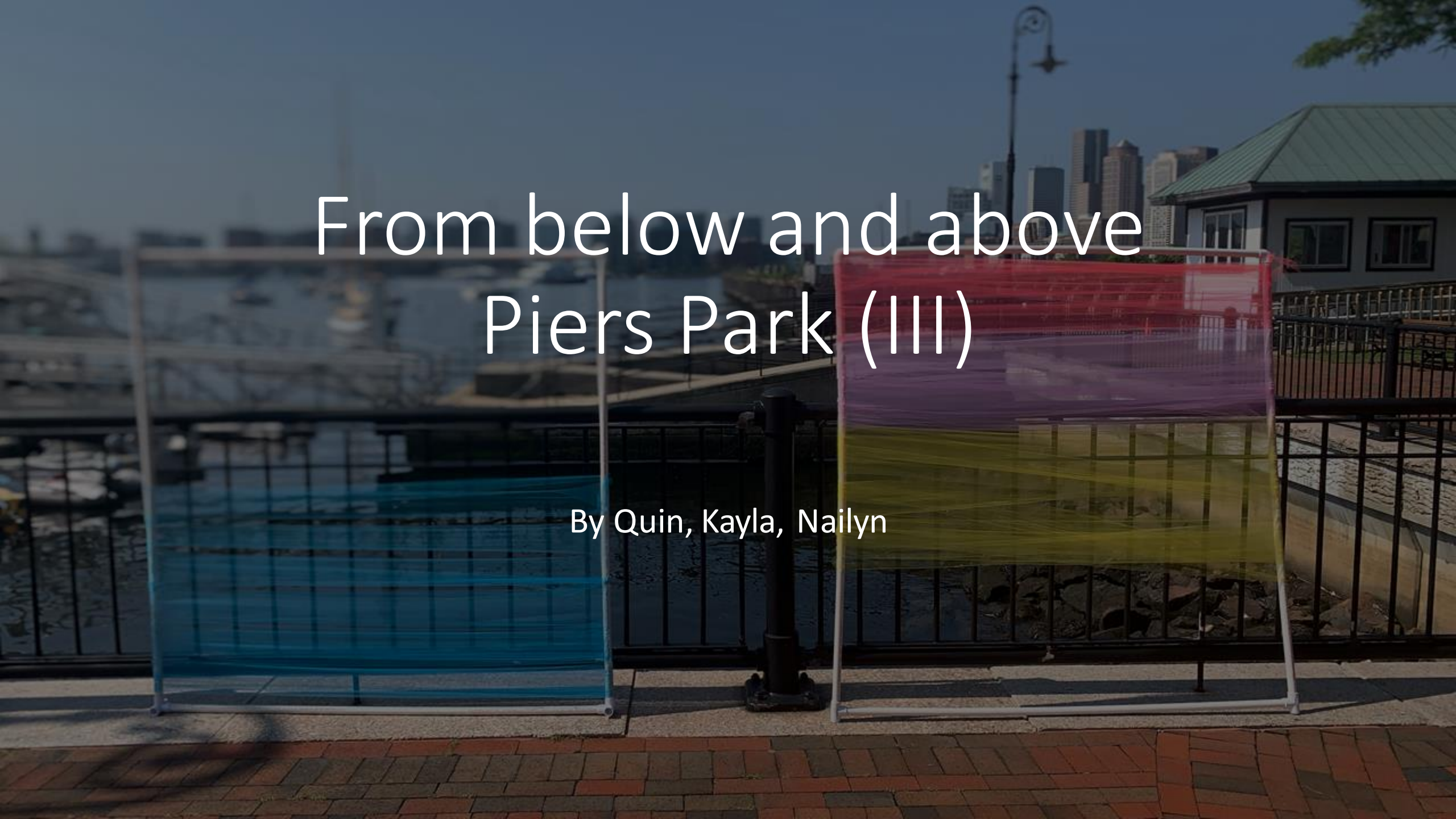


From below and above Piers Park (III)

By Quin, Kayla, Nailyn



Introduction

- **What** is the artwork about?
 - Air pollution & sea level
 - The colors that we chose represent the air pollution and sea level in Piers Park—blue for the water and the shades of pink and yellow for the sky at dawn and dusk. The reason we chose the variety of colors for the sky is because they symbolize the pollutants in the air that cause it to turn such shades (purple, pink, etc)
-



Why is air
pollution/sea
level rise
important?

How is this affecting East Boston?

Just like the rest of Boston and the world, humans are constantly breathing in pollutants in the air unknowingly, especially in urban areas. Since a majority of East Boston is under urban construction, chemicals are constantly released into the air that residents of the neighborhood would then breathe in.

Additionally, East Boston is a waterfront neighborhood, meaning it is bordered by water, so in times of bad weather, this neighborhood is at high risk of flooding.

Key: What does each color represent?

- Below represents the different pollutants that are in the sky right now: Dark Pink : Pink: Yellow:



chromium



cobalt

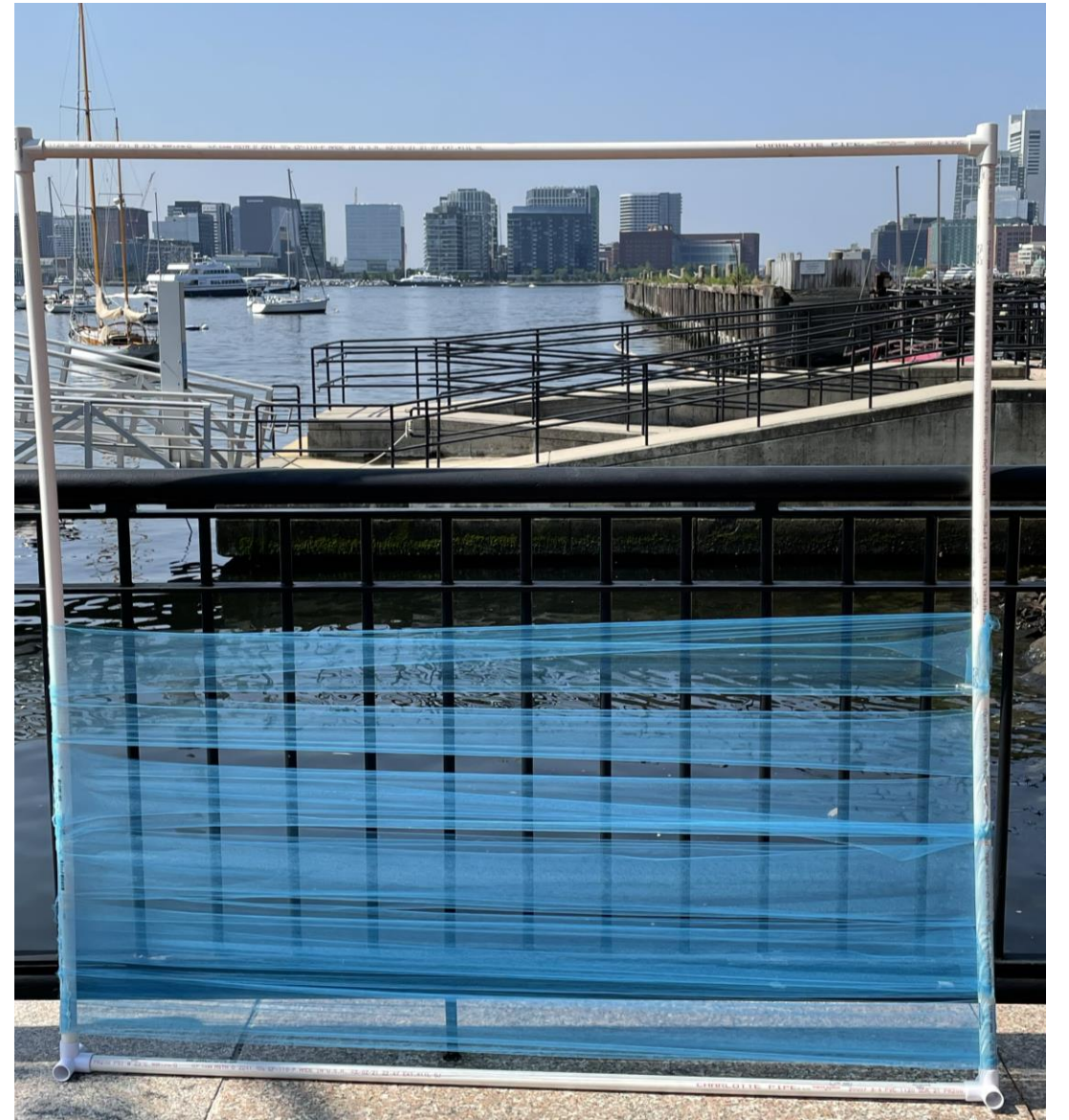


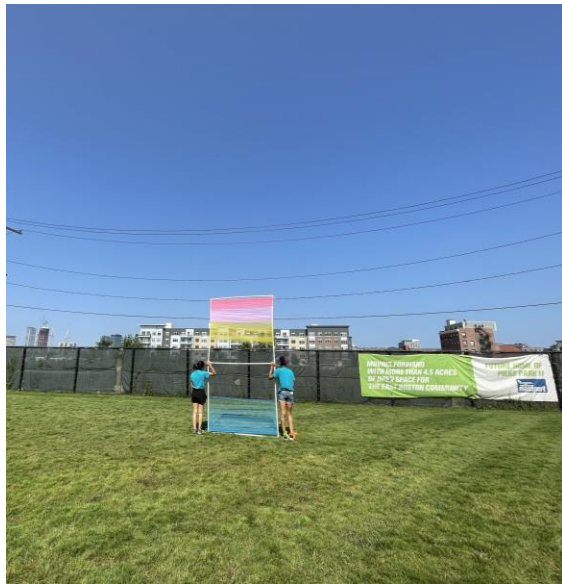
Everything
else



PHOTOS

The first picture represent the air pollution, where the 2nd and 3rd picture represent the air pollution and sea level rise as they both relate to the impacts of our community.







What can we do about these issues?

- We can spread awareness about Boston's air pollution and threats of sea level rise in the coming years.
- We have to actively engage in projects like this to not only show the difference in sea level rise through artwork, but also work together to mitigate the effects of climate change.
- This also means that we, as people, need to change the way that we live. Just because we are trying to survive, doesn't mean we need to ruin the wellbeing of those around us; our actions are directly and indirectly affecting our health and safety.